

VIVA Interlibrary Loan Forum

July 18th 2008

Odyssey Update



Stuart Frazer

Old Dominion University
sfrazer@odu.edu

Elizabeth Anne Teaff

Washington & Lee University
teaffe@wlu.edu

What is Odyssey?

Odyssey is a protocol that provides document transmission over the Internet from IP address to IP address

Developed by Atlas Systems

Odyssey can only transmit documents to other Odyssey sites

Odyssey is not compatible with Ariel

Data is transmitted via a combination of XML and file stream
Transport occurs through TCP/IP on port 7968

Standalone version only provides for article transmission
Can not post or transmit documents to patrons

Odyssey with ILLiad does provide for posting of documents for patrons

3 Odyssey Environments

- (1) FREE Standalone Version runs on networked PC**
- (2) ILLiad with Hosted Server administered by Atlas/OCLC**
- (3) ILLiad with Local Server administered by Library or Campus IT Staff**

Why use Odyssey?

Standalone version is FREE

Easy to implement and use

Support from user community via Odyssey listserv

**Increase of use among Resource Sharing
Community**

**Alternative to Ariel and/or
to emailing articles as PDF attachments**

What you need to Use Odyssey?

A static IP address or DNS name

Workstation with attached scanner

Need ILLiad software, if you wish to use more robust version of product

Contact OCLC Customer support for installation help
ILLiad

How to download Odyssey Standalone

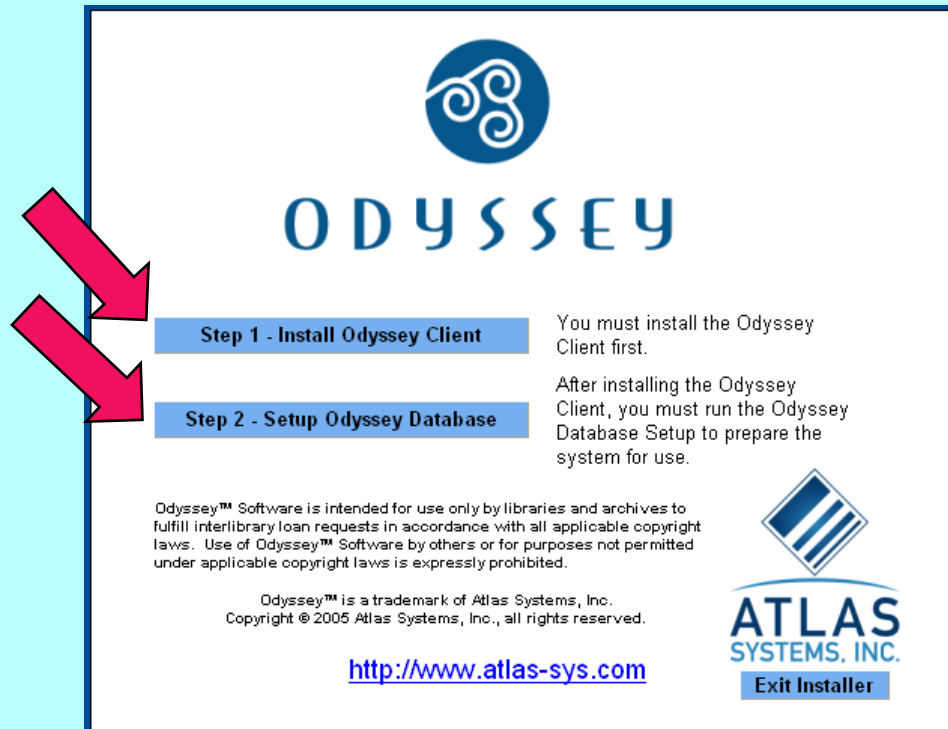
Go to: <http://www.atlas-sys.com/products/odyssey>

Fill out the quick application form
Once complete, instructions and a link to
download the Odyssey Standalone file will be
emailed to you

Once you install the file, you may subscribe to the
Odyssey listserv by sending an e-mail to:
Odyssey-L-join@iris.atlas-sys.com

The Installation Process

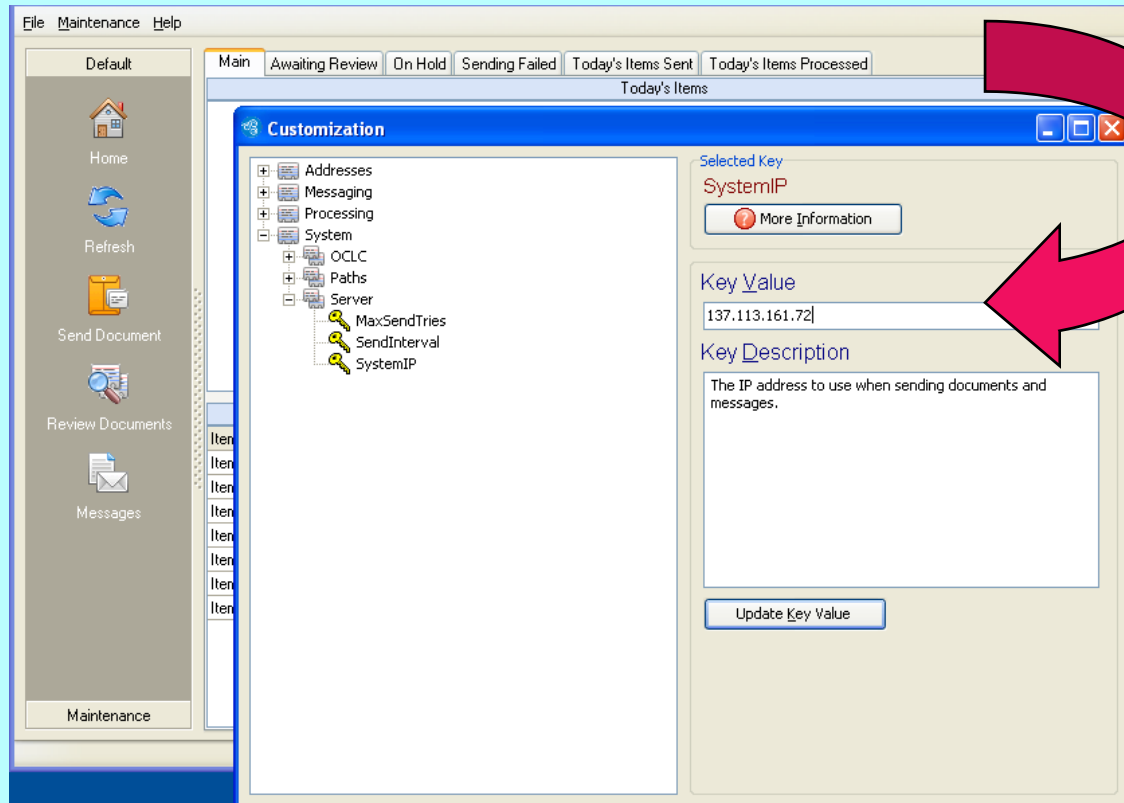
- (1) Run **OdysseyInstallerPackage.exe** to unzip the install files and accept default target unzip location folder
- (2) Odyssey installer will launch
- (3) Choose Step 1 to install Odyssey
- (4) Accept defaults
- (5) If prompted to re-start, choose to re-start later
- (6) Choose Step 2 to prepare database
- (7) Accept defaults
- (8) Exit installer
- (9) Restart your computer



Completing the Process Initial Configuration

Launch Odyssey

Go to Maintenance, Customization, System, Server, System IP, and enter your static IP address



Additional Standalone Info

Edit your Constant Data to include your Odyssey IP address
For Odyssey standalone, your Odyssey Address must be in the email field using the following format: 123.123.123.123/ILL

Edit your Policies Directory Information to include your Odyssey address

For Operating Instructions:

<http://www.atlas-sys.com/products/odyssey/pdf/OdysseyInstructions.pdf>

Your Odyssey workstation needs to be turned on in order to receive articles via Odyssey standalone

Odyssey uses port 7968 for sending and receiving
Odyssey should open this port for you when you do the install, but if your network has additional firewalls talk to your IT staff about opening the port

You can run Ariel and Odyssey on the same workstation

Special Thanks to Brian Miller of OSU for the use of his Odyssey Standalone FAQ:

<https://www.illiad.osu.edu/illiad/osu/lending/odysseyfaq.html>

VIVA Resource Sharing Odyssey Trials

August 2007, the VIVA Resource Sharing Committee asked those libraries with ILLiad's Odyssey to use it and experiment with "Trusted" sending

This feature eliminates need for staff intervention when Odyssey documents are received

Asked non-ILLiad libraries to experiment with using the Standalone product

Issues with Standalone have been lack of support from Atlas and communication with campus IT staff

Who's using Odyssey?

Prior to VIVA Trial, according to the OCLC Policies Directory (PD),
only 7 VIVA Institutions used Odyssey
Currently, according to the PD,
these Virginia Institutions may deliver articles via Odyssey:

College of William and Mary
College of William and Mary, Law
Eastern Mennonite University
Eastern Shore Community College
Emory and Henry College
Ferrum College
Hampden-Sydney College
James Madison University
Liberty University
Old Dominion University
Radford University
Roanoke Higher Education Center
Tidewater Community College
Union-PSCE
University of Mary Washington
University of Virginia
University of Virginia, Law
University of Virginia, Health Science
Virginia Commonwealth University
Virginia Tech
Virginia Military Institute
Virginia Wesleyan College
Washington and Lee University
Washington and Lee University Law

Over 410 libraries in the U.S. use Odyssey

Currently, 33 libraries in VA use ILLiad
Over 1050 Libraries Worldwide have ILLiad

Over 1170 libraries Worldwide use Ariel
48 VIVA libraries send via Ariel

OCLC Policies Directory

Unit	
General Information	
Unit Name and Symbol	WASHINGTON & LEE UNIV - ILL (VLW)
Shipping Address	E. Teaff / Washington & Lee University / 204 W. Washington St. / James G. Leyburn Library-ILL Office / Lexington / Virginia / 24450
OCLC Supplier	Yes Change
Regional Service Provider	SOLINET
Show Directory Data To	All Authorized Libraries
Reciprocal Lender	No
International Lender	Yes
Library Type	University Library
Group Affiliations	OBRL , RBUL , RULS , VA\$L , VA#P , SL#N , SIXX , VIVA , ILLD
Additional Symbols	ViLxW
Library Catalog	http://annie.wlu.edu/
Non-circulating	Reference Materials, Bound Periodicals, Items in Special Collections, Current Imprints (items added to our collection within the last 6 months).
Lending Information	
Lending Contacts	Elizabeth Anne Teaff More...
Request Methods Accepted	<i>Loans:</i> ALA , Email , Fax , Mail , OCLC ILL <i>Copies:</i> ALA , Email , Fax , Mail , OCLC ILL
Fees	<i>Loans:</i> 0.00 - 15.00 More... <i>Copies:</i> 0.00 - 1.00 More...
Periods	<i>Loan Period:</i> 8 weeks No renewals
Delivery Methods	<i>Loans:</i> Courier , Mail <i>Copies:</i> Ariel - FTP , ILLiad - Odyssey , Mail

PD Info for ILLiad Odyssey

Institution Information	
<u>Institution</u>	WASHINGTON & LEE UNIV
<u>Institution Symbol</u>	VLW
<u>OCLC Supplier</u>	Yes Change
<u>Regional Service Provider</u>	SOLINET
<u>Group Affiliations</u>	OBRL , RBUL , RULS , VA\$L , VA#P , SL#N , SIXX , VIVA , ILLD
<u>Additional Symbols</u>	ViLxW
<u>OCLC Relationship</u>	Full
<u>Profiled Address</u>	LEXINGTON / Virginia / 24450
Unit Information	
<u>Unit</u>	ILL
<u>Show Directory Data To</u>	All Authorized Libraries
<u>Reciprocal Lender</u>	No
<u>International Lender</u>	Yes
<u>Library Type</u>	University Library
<u>Library Catalog</u>	http://annie.wlu.edu/
<u>Library Homepage</u>	http://library.wlu.edu
<u>Non-circulating</u>	Reference Materials, Bound Periodicals, Items in Special Collections, Current Imprints (items added to our collection within the last 6 months).
Addresses	
<u>Shipping Address</u>	E. Teaff / Washington & Lee University / 204 W. Washington St. / James G. Leyburn Library-ILL Office / Lexington / Virginia / 24450
<u>Return To Address</u>	E. Teaff / Washington & Lee University / 204 W. Washington St. / James G. Leyburn Library-ILL Office / Lexington / Virginia / 24450
Borrowing Information	
<u>Ariel Addresses</u>	FTP: 137.113.161.40 (version 3.4)
<u>ILLiad Odyssey Address</u>	137.113.100.183/ILL